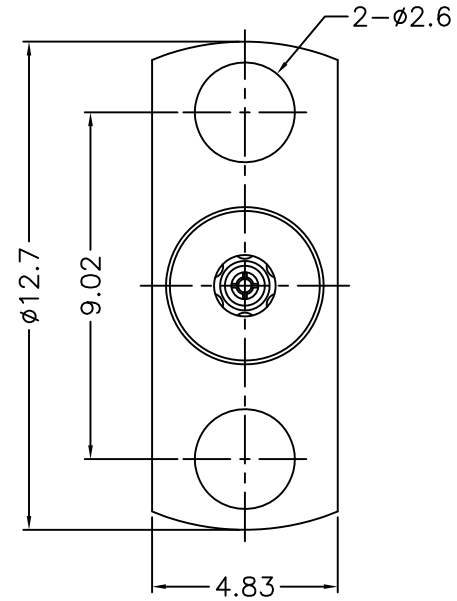
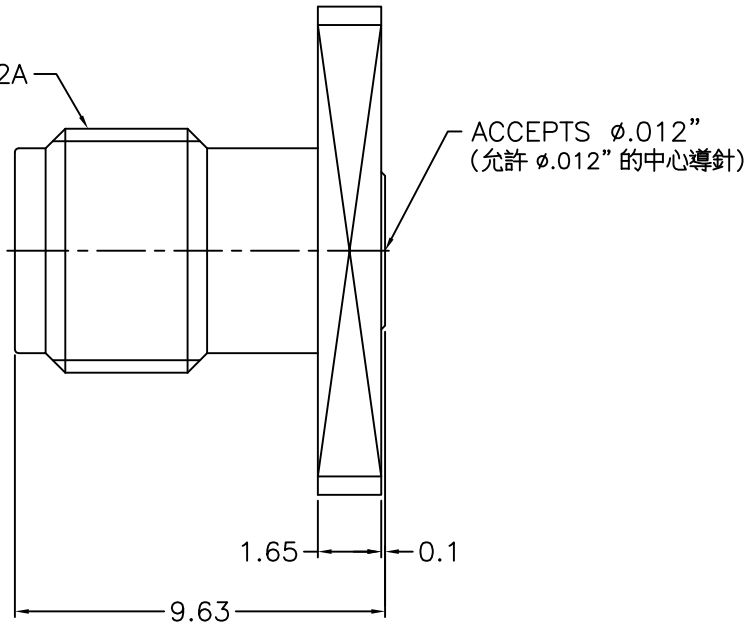


1	2		3	4	5	6	7	8
REVISIONS								
ISS	ZONE	DESCRIPTION\PER REQUEST\DATE						

1/4-36UNS-2A



NOTES: FINISH (PLATING THICKNESS IN MICRO-INCHES)

1. STAINLESS STEEL
2. PASSIVATED
3. BERYLLIUM COPPER
4. GOLD PL. 5 MIN. THICK OVER NICKEL PL. 50 MIN. THICK OVER COPPER PL. 50 MIN. THICK
5. GOLD PL. 10 MIN. THICK OVER NICKEL PL. 50 MIN. THICK OVER COPPER PL. 50 MIN. THICK
6. ULTEM 1000

RoHS COMPLIANT

		DIMENSIONS ARE IN MILLIMETERS				PART NO.		<b>G.L.I.</b>	
		UNLESS OTHERWISE SPECIFIED TOLERANCES				APPROVED			
4 RING		NOTE 1	NOTE 4			DATE 08-08-'19		2.92mm PANEL RECEPT. JACK	
3 CONTACT PIN		NOTE 3	NOTE 5			DATE 08-08-'19		DRAWING NO. 292-6551K8-.012-50	
2 INSULATOR		NOTE 6	NATURAL			DATE 08-08-'19		FILE NO. R:\D\G\DWG\292\6551K8\012\50	
1 BODY		NOTE 1	NOTE 2			DATE 08-08-'19			
NO.	DESCRIPTION	MATERIAL	FINISH	Q'TY	DRAWING NO.	SCALE	5/1	ISSUE	1

0.5-6 = ±0.2  
 6-30 = ±0.4  
 30-120 = ±0.6  
 120-315 = ±1  
 315-1000 = ±1.6  
 1000-2000 = ±2.4

DRAWN ALAN  
 DATE 08-08-'19

TITLE 2.92mm PANEL RECEPT. JACK  
 DRAWING NO. 292-6551K8-.012-50  
 FILE NO. R:\D\G\DWG\292\6551K8\012\50

1	2		3	4	5	6	7	8
---	---	--	---	---	---	---	---	---