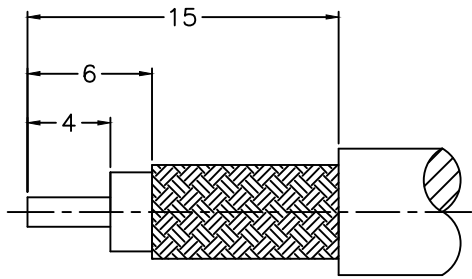
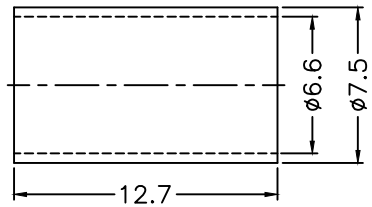
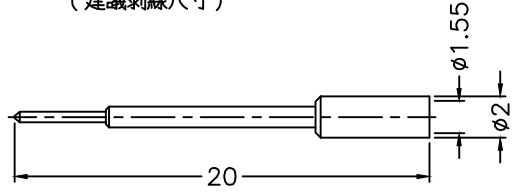
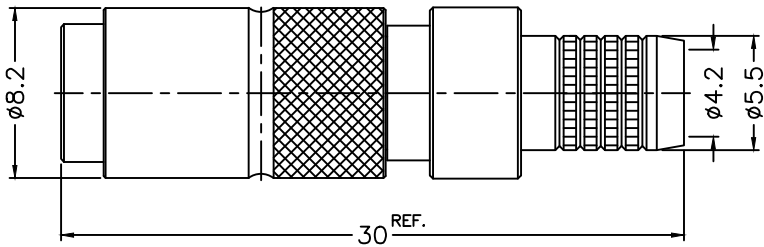


1 2 3 4 5 6 7 8

REVISIONS		
ISS	ZONE	DESCRIPTION\PER REQUEST\DATE



RECOMMENDED
CABLE STRIPPING DIM'S
(建議剝線尺寸)



- NOTES: FINISH (PLATING THICKNESS IN MICRO-INCHES)
1. BRASS
 2. NICKEL PL. 100 MIN. THICK OVER COPPER PL. 50 MIN. THICK
 3. BERYLLIUM COPPER
 4. GOLD PL. 3 MIN. THICK OVER NICKEL PL. 50 MIN. THICK OVER COPPER PL. 50 MIN. THICK
 5. TEFLON

1. CRIMPED FERRULE
HEX CRIMP SIZE .255"
2. CONTACT PIN TO SOLDER

10	FERRULE	COPPER	NOTE 2	1	FR-66-75-127C
9	CONTACT PIN	NOTE 1	NOTE 4	1	300-1111A1-9 -1.55
8	BARREL	NOTE 1	NOTE 2	1	300-1111A1-8 -16
7	RING	NOTE 1	NOTE 2	1	300-1111A1-7
6	OUTER BODY	NOTE 1	NOTE 2	1	300-1111A1-6
5	SPRING	STAINLESS STEEL	NATURAL	2	300-1111A1-5
4	BALL	STAINLESS STEEL	NATURAL	3	300-1111A1-4
3	OUT CONTACT	NOTE 3	NOTE 4	1	300-1111A1-3
2	INSULATOR	NOTE 5	NATURAL	1	300-1111A1-2 -50T
1	BODY	NOTE 1	NOTE 2	1	300-1111A1-1
NO.	DESCRIPTION	MATERIAL	FINISH	Q'TY	DRAWING NO.

DIMENSIONS ARE IN MILLIMETERS
UNLESS OTHERWISE SPECIFIED
TOLERANCES
0.5-6 = ±0.2
6-30 = ±0.4
30-120 = ±0.6
120-315 = ±1
315-1000 = ±1.6
1000-2000 = ±2.4

PART NO.	
APPROVED	DATE 07-01-'10
CHECKED	DATE 07-01-'10
DRAWN	DATE 07-01-'10

G.L.I.	
TITLE	1.0/2.3 PUSH-PULL CRIMP PLUG (FOR LMR 240, TWB 2401 CABLE)
DRAWING NO.	300-1111A1-16-50
FILE NO.	R:\D\G\DWG\300\1111A1\16\50

1 2 3 4 5 6 7 8

F
E
D
C
B
A

F
E
D
C
B
A